



GPR92 Polyclonal Antibody

Catalog No	YP-Ab-13354
Isotype	IgG
Reactivity	Human;Rat;Mouse;
Applications	WB;IHC;IF;ELISA
Gene Name	LPAR5
Protein Name	Lysophosphatidic acid receptor 5
Immunogen	The antiserum was produced against synthesized peptide derived from human GPR92. AA range:241-290
Specificity	GPR92 Polyclonal Antibody detects endogenous levels of GPR92 protein.
Formulation	Liquid in PBS containing 50% glycerol, 0.5% BSA and 0.02% sodium azide.
Source	Polyclonal, Rabbit,IgG
Purification	The antibody was affinity-purified from rabbit antiserum by affinity-chromatography using epitope-specific immunogen.
Dilution	Western Blot: 1/500 - 1/2000. Immunohistochemistry: 1/100 - 1/300. Immunofluorescence: 1/200 - 1/1000. ELISA: 1/5000. Not yet tested in other applications.
Concentration	1 mg/ml
Purity	≥90%
Storage Stability	-20°C/1 year
Synonyms	LPAR5; GPR92; GPR93; Lysophosphatidic acid receptor 5; LPA receptor 5; LPA-5; G-protein coupled receptor 92; G-protein coupled receptor 93
Observed Band	40kD
Cell Pathway	Cell membrane; Multi-pass membrane protein.
Tissue Specificity	Not expressed in frontal cortex, basal forebrain, caudate putamen, thalamus, or hippocampus.
Function	function:Receptor for lysophosphatidic acid (LPA), a mediator of diverse cellular activities.,similarity:Belongs to the G-protein coupled receptor 1 family.,tissue specificity:Not expressed in frontal cortex, basal forebrain, caudate putamen, thalamus, or hippocampus.,
Background	lysophosphatidic acid receptor 5(LPAR5) Homo sapiens This gene encodes a member of the rhodopsin class of G protein-coupled transmembrane receptors. This protein transmits extracellular signals from lysophosphatidic acid to cells through heterotrimeric G proteins and mediates numerous cellular processes. Many G protein receptors serve as targets for pharmaceutical drugs. Transcript variants of this gene have been described.[provided by RefSeq, Dec 2008],



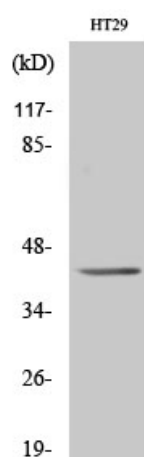
matters needing attention

Avoid repeated freezing and thawing!

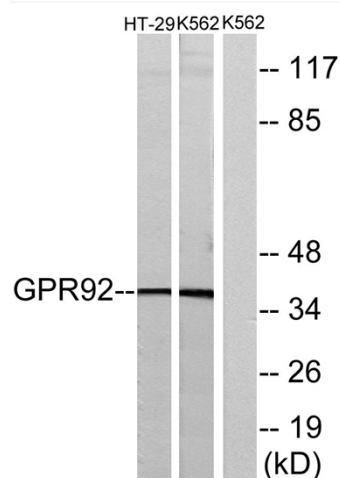
Usage suggestions

This product can be used in immunological reaction related experiments. For more information, please consult technical personnel.

Products Images



Western Blot analysis of various cells using GPR92 Polyclonal Antibody diluted at 1:500



Western blot analysis of lysates from HT-29 and K562 cells, using GPR92 Antibody. The lane on the right is blocked with the synthesized peptide.